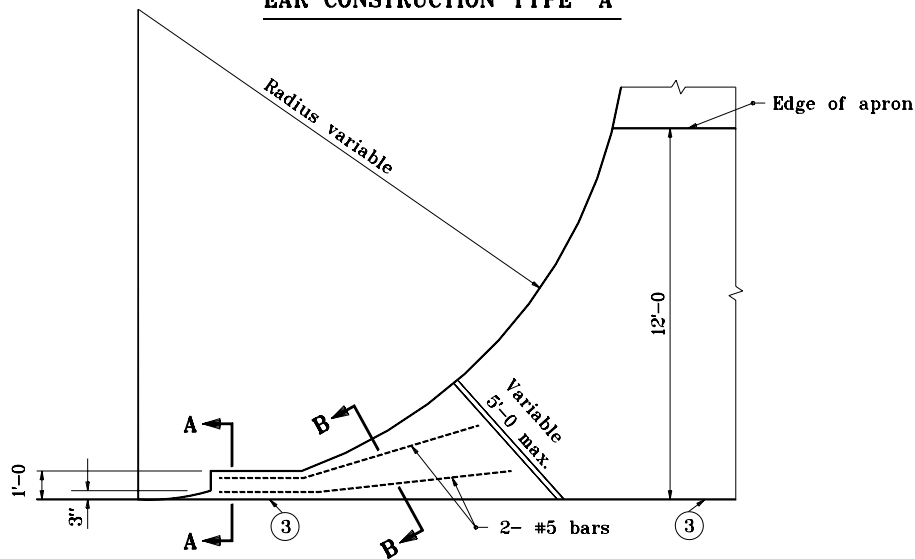
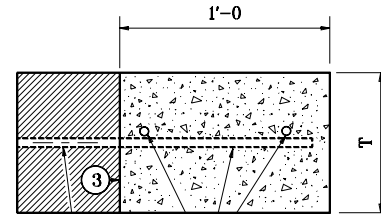


**EAR CONSTRUCTION TYPE "A"**

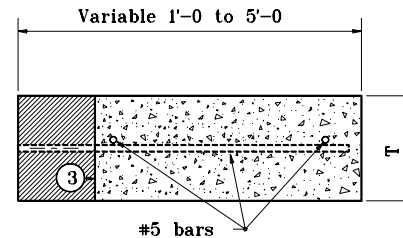


**EAR CONSTRUCTION TYPE "A"  
FOR PAVED APRON**



Omit dowel bars  
where pavement  
is in place.

**SECTION A-A**



**SECTION B-B**

**LEGEND**

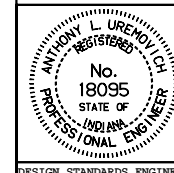
- ① Keyway joint
- ② 1" preformed joint filler
- ③ Longitudinal construction joint
- T = Thickness of pavement

INDIANA DEPARTMENT OF TRANSPORTATION

**EAR CONSTRUCTION  
TYPE A**

SEPTEMBER 1997

STANDARD DRAWING NO. **E 605-ERCN-01**



DETAILS PLACED IN THIS FORMAT 11-15-99

/s/ Anthony L. Uremovich 11-15-99  
DESIGN STANDARDS ENGINEER DATE

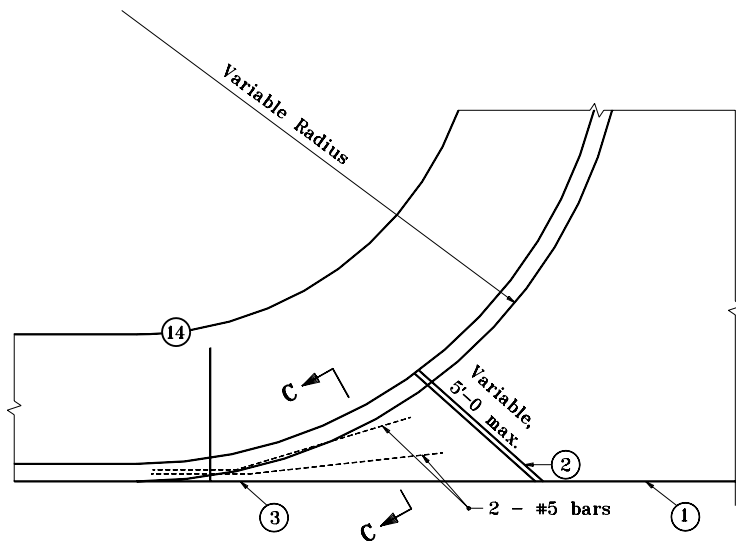
/s/ Firooz Zandi 11-15-99  
CHIEF HIGHWAY ENGINEER DATE

DESIGN STANDARDS ENGINEER

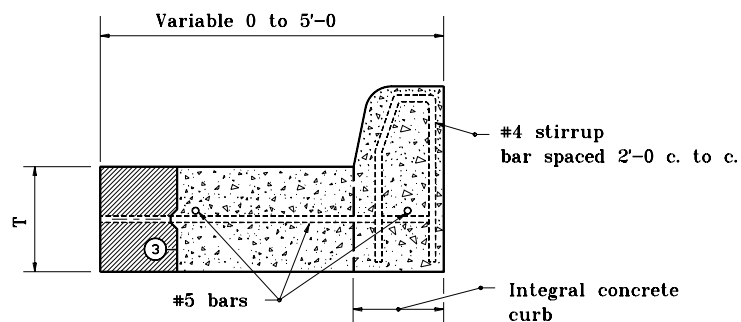
ORIGINALLY APPROVED 9-01-97

**LEGEND**

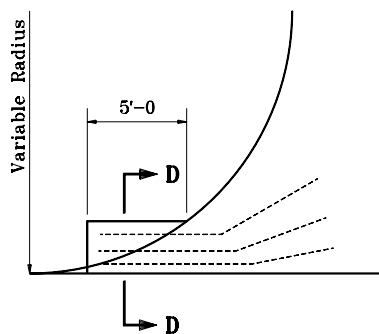
- ① Keyway joint
- ② 1" preformed joint filler
- ⑭ Integral concrete curb
- ③ Longitudinal construction joint
- T = Thickness of pavement



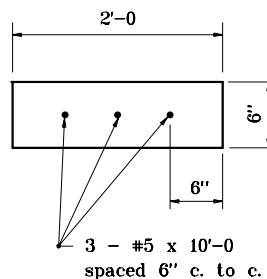
**EAR CONSTRUCTION TYPE "B"**



**SECTION C-C**



**EAR CONSTRUCTION TYPE "C"**



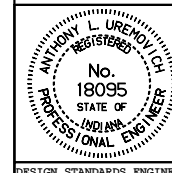
**SECTION D-D**

INDIANA DEPARTMENT OF TRANSPORTATION

**EAR CONSTRUCTION  
TYPE B AND C**

JANUARY 1998

STANDARD DRAWING NO. E 605-ERCN-02



DETAILS PLACED IN THIS FORMAT 11-15-99

/s/ Anthony L. Uremovich 11-15-99  
DESIGN STANDARDS ENGINEER DATE

/s/ Firooz Zandi 11-15-99  
CHIEF HIGHWAY ENGINEER DATE

DESIGN STANDARDS ENGINEER

ORIGINALLY APPROVED 1-02-98